

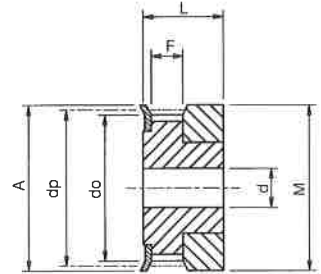
# Pulleys for Metric Polyurethane T2.5 and T5 Belts



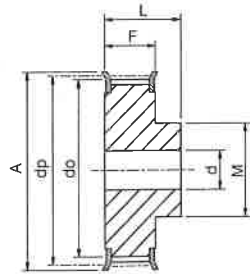
## Pulley Types

The Pulley types referred to in tables are as drawings below. Suffix 'F' indicates pulley has flanges.

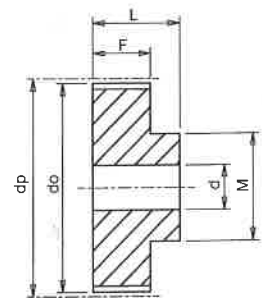
Std. Pulleys can be reworked to customers bore and keywaying requirement.



Type 0F



Type 1F



Type 1

All pulleys machined from aluminium for low weight and inertia, and fitted as indicated with steel flanges. All dimensions in mm

Catalogue No.	No. Teeth Z	Pulley Type	Pitch Circle Diameter dp	Min. Bore d	Max Bore d	Outside Diameter do	Flange Diameter A	Pulley Width F	Bore Length L	Hub Diameter M	Approx. Weight kg
<b>2.5mm Pitch Pulleys for 6mm Wide Belt Ref. 6T2.5-</b>											
6 T2.5-12	12	0F	9.55	4	4.5	9.0	13.0	9	16	13	.003
6 T2.5-14	14	0F	11.14	4	6	10.6	15.0	9	16	15	.004
6 T2.5-15	15	0F	11.94	4	6	11.4	15.0	9	16	15	.005
6 T2.5-16	16	0F	12.73	4	7	12.2	16.0	9	16	16	.005
6 T2.5-18	18	1F	14.32	4	6.5	13.8	17.5	10	16	10	.006
6 T2.5-19	19	1F	15.12	4	6.5	14.6	18.0	10	16	10	.007
6 T2.5-20	20	1F	15.92	4	7	15.4	20.0	10	16	11	.008
6 T2.5-22	22	1F	17.51	4	7	17.0	23.0	10	16	11	.010
6 T2.5-24	24	1F	19.10	4	8	18.5	23.0	10	16	12	.012
6 T2.5-25	25	1F	19.89	4	8.5	19.3	23.0	10	16	13	.013
6 T2.5-26	26	1F	20.69	4	9	20.1	25.0	10	16	14	.014
6 T2.5-28	28	1F	22.28	4	9	21.7	25.0	10	16	14	.016
6 T2.5-30	30	1F	23.87	6	10	23.3	28.0	10	16	16	.018
6 T2.5-32	32	1F	25.46	6	10	24.9	32.0	10	16	16	.020
6 T2.5-36	36	1F	28.65	6	13	28.1	36.0	10	16	20	.026
6 T2.5-40	40	1F	31.83	6	14	31.3	38.0	10	16	22	.032
6 T2.5-44	44	1F	35.01	6	15	34.5	42.0	10	16	24	.040
6 T2.5-48	48	1	38.20	6	17	37.7	-	10	16	26	.048
6 T2.5-60	60	1	47.75	8	22	47.2	-	10	16	34	.073
<b>5mm Pitch Pulleys for 10mm Wide Belt Ref. 10T5-</b>											
10 T5-10	10	1F	15.92	4	5	15.0	19.5	15	21	8	.012
10 T5-12	12	1F	19.10	4	7	18.2	23.0	15	21	11	.016
10 T5-14	14	1F	22.28	4	8	21.4	25.0	15	21	13	.019
10 T5-15	15	1F	23.87	6	10	23.0	28.0	15	21	16	.021
10 T5-16	16	1F	25.46	6	11	24.6	32.0	15	21	18	.025
10 T5-18	18	1F	28.65	6	13	27.8	32.0	15	21	20	.031
10 T5-19	19	1F	30.24	6	14	29.4	36.0	15	21	22	.036
10 T5-20	20	1F	31.83	6	15	31.0	36.0	15	21	23	.038
10 T5-22	22	1F	35.01	6	15	34.1	38.0	15	21	24	.046
10 T5-24	24	1F	38.20	6	17	37.4	42.0	15	21	26	.054
10 T5-25	25	1F	39.79	6	17	38.9	44.0	15	21	26	.058
10 T5-26	26	1F	41.38	6	17	40.6	44.0	15	21	26	.062
10 T5-27	27	1F	42.97	8	19	42.2	48.0	15	21	30	.064
10 T5-28	28	1F	44.56	8	20	43.7	48.0	15	21	32	.071
10 T5-30	30	1F	47.75	8	22	46.9	51.0	15	21	34	.075
10 T5-32	32	1F	50.93	8	24	50.1	54.0	15	21	38	.088
10 T5-36	36	1F	57.30	8	24	56.4	64.0	15	21	38	.114
10 T5-40	40	1F	63.66	8	26	62.8	66.5	15	21	40	.138
10 T5-42	42	1F	66.84	8	26	66.0	70.0	15	21	40	.153
10 T5-44	44	1	70.03	8	29	69.2	-	15	21	45	.170
10 T5-48	48	1	76.39	8	32	75.5	-	15	21	50	.200
10 T5-60	60	1	95.49	8	42	94.6	-	15	21	65	.308
<b>5mm Pitch Pulleys for 16mm Wide Belt Ref. 16T5-</b>											
16 T5-10	10	1F	15.92	4	5	15.0	19.5	21	27	8	.016
16 T5-12	12	1F	19.10	4	7	18.2	23.0	21	27	11	.022
16 T5-14	14	1F	22.28	4	8	21.4	25.0	21	27	13	.027
16 T5-15	15	1F	23.87	6	10	23.0	28.0	21	27	16	.030
16 T5-16	16	1F	25.46	6	11	24.6	32.0	21	27	18	.036
16 T5-18	18	1F	28.65	6	13	27.8	32.0	21	27	20	.044
16 T5-19	19	1F	30.24	6	14	29.4	36.0	21	27	22	.050
16 T5-20	20	1F	31.83	6	15	31.0	36.0	21	27	23	.054
16 T5-22	22	1F	35.01	6	15	34.1	38.0	21	27	24	.055
16 T5-24	24	1F	38.20	6	17	37.4	42.0	21	27	26	.077
16 T5-25	25	1F	39.79	6	17	38.9	44.0	21	27	26	.082
16 T5-26	26	1F	41.38	6	17	40.6	44.0	21	27	26	.086
16 T5-27	27	1F	42.97	8	19	42.2	48.0	21	27	30	.092
16 T5-28	28	1F	44.56	8	20	43.7	48.0	21	27	32	.094
16 T5-30	30	1F	47.75	8	22	46.9	51.0	21	27	34	.106
16 T5-32	32	1F	50.93	8	24	50.1	54.0	21	27	38	.124
16 T5-36	36	1F	57.30	8	24	56.4	64.0	21	27	38	.160
16 T5-40	40	1F	63.66	8	26	62.8	66.5	21	27	40	.195
16 T5-42	42	1F	66.84	8	26	66.0	70.0	21	27	40	.206
16 T5-44	44	1	70.03	8	29	69.2	-	21	27	45	.230
16 T5-48	48	1	76.39	8	32	75.5	-	21	27	50	.282
16 T5-60	60	1	95.49	8	42	94.6	-	21	27	65	.432
<b>5mm Pitch Pulleys for 25mm Wide Belt Ref. 25T5-</b>											
25 T5-10	10	1F	15.92	4	5	15.0	19.5	30	36	8	.025
25 T5-12	12	1F	19.10	4	7	18.2	23.0	30	36	11	.032
25 T5-14	14	1F	22.28	4	8	21.4	25.0	30	36	13	.038
25 T5-15	15	1F	23.87	6	10	23.0	28.0	30	36	16	.042
25 T5-16	16	1F	25.46	6	11	24.6	32.0	30	36	18	.052
25 T5-18	18	1F	28.65	6	13	27.8	32.0	30	36	20	.063
25 T5-19	19	1F	30.24	6	14	29.4	36.0	30	36	22	.072
25 T5-20	20	1F	31.83	6	15	31.0	36.0	30	36	23	.078
25 T5-22	22	1F	35.01	6	15	34.1	38.0	30	36	24	.082
25 T5-24	24	1F	38.20	8	17	37.4	42.0	30	36	26	.110
25 T5-25	25	1F	39.79	8	17	38.9	44.0	30	36	26	.117
25 T5-26	26	1F	41.38	8	17	40.6	44.0	30	36	26	.121
25 T5-27	27	1F	42.97	8	19	42.2	48.0	30	36	30	.123
25 T5-28	28	1F	44.56	8	20	43.7	48.0	30	36	32	.127
25 T5-30	30	1F	47.75	8	22	46.9	51.0	30	36	34	.152
25 T5-32	32	1F	50.93	8	24	50.1	54.0	30	36	38	.177
25 T5-36	36	1F	57.30	8	24	56.4	64.0	30	36	38	.232
25 T5-40	40	1F	63.66	8	26	62.8	66.5	30	36	40	.278
25 T5-42	42	1F	66.84	8	26	66.0	70.0	30	36	40	.296
25 T5-44	44	1	70.03	8	29	69.2	-	30	36	45	.327
25 T5-48	48	1	76.39	8	32	75.5	-	30	36	50	.402
25 T5-60	60	1	95.49	8	42	94.6	-	30	36	65	.617

Tel +44 121 360 0155 Fax +44 121 325 1079 Email sales@crossmorse.com